

DP II M/V Anne Candies



Offices

7171 Hwy. 6 North, Suite 210
Houston, TX 77095

9301 Largo Drive West
Largo, MD 20774

375 Hwy. 182
Bayou Vista, LA 70380

5409 Beamon Road, Suite B
Norfolk, VA 23513

444 W. 8th Street
National City, CA 91950-1002

99-1221 Halawa Valley St., Suite B
Aiea, HI 96701

Point of Contact

Robert Keith
rkeith@phnx-international.com
Office: 281.815.8050
Fax: 281.815.8060
Mobile: 281.221.7181

REGISTRATION

Official No. 1127463
Port New Orleans, LA
Builder/Year Bender Ship Building & Repair Co., 2002

DESCRIPTION

L.O.A. 240 ft
Beam Molded 54 ft
Depth to Main Deck 20 ft
Cargo Deck 4,000 sq ft
DWT Tonnage 3,000 LT
Gross Tonnage 2,068
Maximum Speed 12.5 knots
Draft 16 ft

CLASSIFICATION

ABS +A1 Supply Vessel, +AMS, Circle E, DP II,
Loadline

REGULATORY

USCG Subch. L, Full Ocean SOLAS, IMO A469

CAPACITIES

Total Fuel Oil 221,000 gallons
Fresh Water for Ship 38,950 gallons
Fresh Water Ballast 284,000 gallons
Sea Water Ballast 27,350 gallons
Main Crane 40 T @ 20 ft.
A&R Winch 60T: 8,000 ft X 1.5

MACHINERY

Main Engines (4) 3512, 1360 KW each - Caterpillar
Z-Drive Units (2) Kamewa Aquamaster 2001
Bow Thruster (2) Kamewa 900 HP CPP Tunnel Thrusters
Emergency Generator (1) CAT, 95 KW

ELECTRONICS

Per Regulatory Body & Customer Requirements.

NAVIGATION / POSITIONING*

Surface DGPS, Fully redundant, <1 meter accuracy
FanBeam equivalent laser positioning system
Subsea Navigation USBL, 1/2 of 1% of transponder range

ACCOMMODATIONS

36 Personnel

* Registered professional Surveyors are available who are licensed in Louisiana & Texas



Schilling UHD® Heavy Work

OVERALL

Propulsion system 200 horsepower hydraulic
 Depth rating 3500 msw (11,480 fsw)
 Dimensions (L x W x H) 3.00 x 1.85 x 1.52m (9.8 x 6.1 x 5.0 ft)
 Through frame lift (in addition to vehicle weight) 3500 kg (7718 lbs)

PERFORMANCE

Bollard pull for 200 hp system
 Forward 1345 kgm (2965 lbf)
 Lateral 1320 kgm (2910 lbf)
 Vertical up 1050 kgm (2315 lbf)
 Vertical down 1150 kgm (2535 lbf)
 Thrusters (horizontal) 4 x Sub Atlantic SA420-40
 Thrusters (vertical) 3 x Sub Atlantic SA420-40
 Automatic control modes Heading (semi/full), depth, altitude,
 StationKeep™, Displacement
 Flight control modes Cruise, trim, displacement, auto-follow

TOOLING

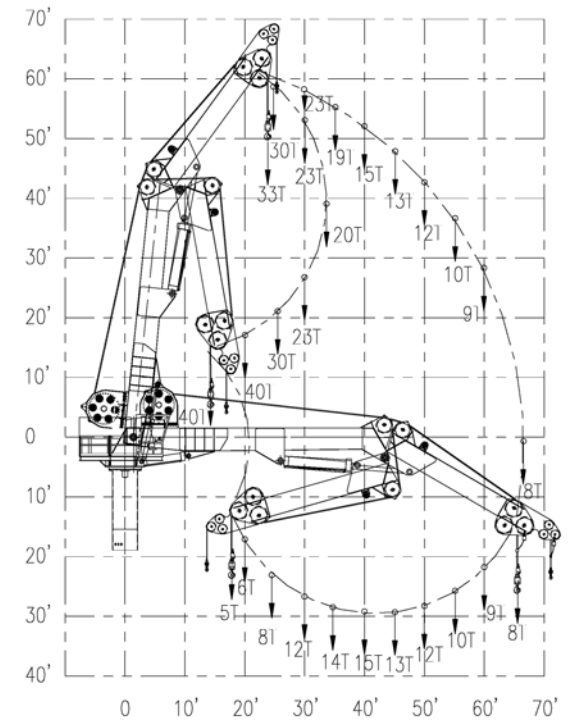
Isolated HPU 22 kW (30 hp)
 7-function manipulator TITAN 4
 5-function grabber RigMaster
 Spare hydraulic functions 11 standard

SENSORS/TELEMETRY

FOG Standard
 Doppler velocity log (for Dynamic Positioning) Standard
 Multiplexer SeaNet mux, 90 serial / 24 video channels
 Instrument power (AC) 4 kW total, 8 x dimmable 115 VAC circuits
 Instrument power (DC) 3 kW total, 12 x dimmable 26 VDC circuits

SYSTEM

Main umbilical Nexans (aramid reinforced)
 Operator interface Dual touchscreen control stations with LCD displays
 Handling system Dynacon standard with dual motor high speed winch



**Static / Dynamic Load Chart
40-Ton Knuckle Boom Crane**

