

## Atmospheric Diving System (ADS)

### HARDSUIT™ 1200

The HARDSUIT™ Atmospheric Diving System (ADS), owned and operated by Phoenix International, is an advanced technological approach to diving services for applications that benefit from having a manned presence at the underwater worksite. Depth rated to 1,200 fsw, this one-man, one-atmosphere suit has proven to be a valuable tool within the commercial diving industry, offering Phoenix clients reduced overall project time, cost, and risk.

### Commercial Applications

The compact size, joint flexibility, and hand pod dexterity of the HARDSUIT™, coupled with its ability to use a variety of conventional diver tools and equipment, give the system practical work capabilities for Phoenix clients worldwide including:

- Construction
- Inspection, Repair, and Maintenance (IRM)
- Salvage and Recovery

### The HARDSUIT™ Advantage

All ADS team members are trained to internationally recognized standards. The HARDSUIT™ systems and support equipment are designed with multiple safety backups including constant computer monitoring of life support parameters during each dive.

The suit provides the following operational advantages:

- Ability to maneuver in any position
- Accessibility to confined spaces due to compact size
- Longer working times (typical dive is 4 to 6 hours) without decompression
- Rapid mobilization capability
- Minimal shipboard deck space requirements
- Smaller crew sizes vs. conventional diving

### Contact us to learn more

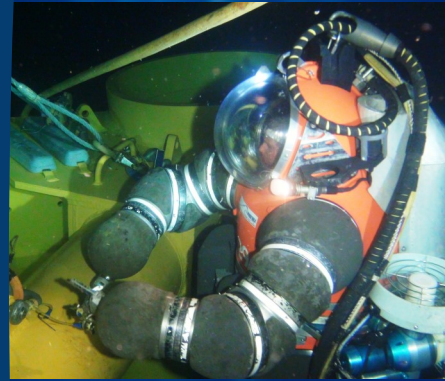
[www.phnx-international.com](http://www.phnx-international.com)

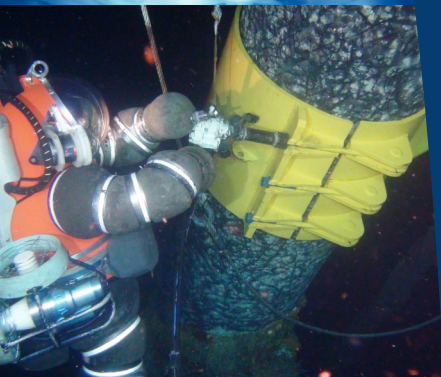
281.815.8050 — Houston, TX

985.399.0606 — Bayou Vista, LA

Bayou Vista, LA | Ft. Lauderdale, FL | Houston, TX | Largo, MD

Chesapeake, VA | Aiea, HI | San Diego, CA | Stennis Space Center, MS





## General

Maximum Operating Depth	1,200 ft (365 m)
Weight in Air	900 lbs (408 kg) dry
Weight in Water	4-5 lbs (1-2 kg) in flying mode
Dimensions	Height: 81.2 in (206 cm) Adjustable to operators 62-75 in tall: (158-190 cm tall) Width: 44 in (112 cm)
Hull Material	A356 cast aluminum

## ADS Description

Propulsion	2 x 2.25 hp-400 Hz
Motion Control	Foot Controls: Left-Vertical control Right-Lateral control
Communications	Hard wire-Digital voice over data Through water-27 kHz acoustic
Life Support	Air re-circulation, automatic Oxygen make up with fan powered CO <sub>2</sub> scrubbing capability Dual, independent oxygen systems (port and starboard)
Life Support Duration	6 hour typical dive time with 42 hour maximum emergency life support
Color Video Camera	Pan and tilt
NDT Sensors (optional)	UT, CP, flooded member, etc.
Hydraulic Tool Power Pack (optional)	Grinders, cutters, impact wrenches, hot stabs, pumps, etc.
Water Blasting	20,000 psi

## Safety/Emergency Equipment

Atmospheric Monitoring System	Surface Monitoring (O <sub>2</sub> , depth, temperature, and cabin pressure)
Ballast Jettison Capability	
Thruster (Propulsor) Jettison Capability	
Tether Cut/Jettison Capability	
Radio Frequency Beacon/Xenon Strobe	
Emergency 37.5 kHz Pinger	



**Phoenix International Holdings, Inc.**  
An employee owned company