

Propeller Repair

Phoenix's ship repair division consists of experienced commercial divers that perform hi-tech, class approved underwater propeller repairs for maximum propulsive efficiency.

Our Certified Propeller Technicians can carry out the following propeller related activities:

- Blade Straightening (cold bending)
- Blade Cropping
- Blade Replacement
- Correction of Propeller-Induced Engine Overload
- Crack Repair
- Damage Inspection and Measurement
- Diameter and Blade Area Reduction
- Fully Engineered Design Modifications
- Leading-and Trailing-Edge Repair and Modifications
- NDT or Close Visual Inspection (CVI)/Evaluation
- Replacement of Controllable Pitch Propeller (CPP) Blades and Blade Seals
- Static Balancing

Blade Straightening

Phoenix divers are able to cold-straighten damaged blades underwater, thereby eliminating costly downtime associated with having to go into dry dock. By straightening the propellers, optimum propulsion efficiency can be restored to the vessel.

Contact us to learn more

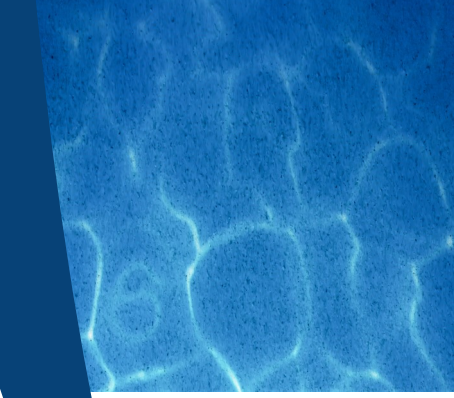
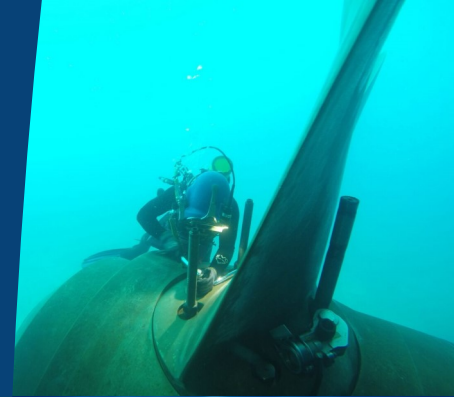
www.phnx-international.com

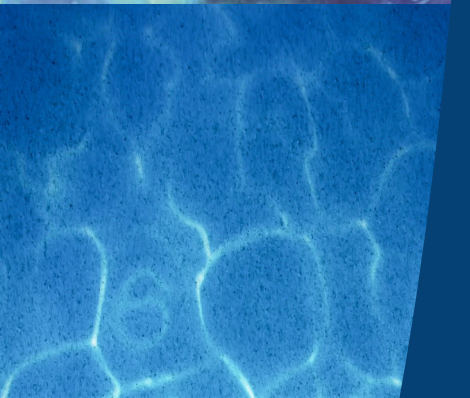
985.399.0606—Bayou Vista, LA | 954.523.4038—Ft. Lauderdale, FL

281.815.8050—Houston, TX | 301.341.7800—Largo, MD

757.855.7516—Chesapeake, VA | 808.486.6595—Aiea, HI

619.207.0871—San Diego, CA | 228.731.7898—Stennis Space Center, MS





Blade Cropping

Upon inspection and determination of the inability to straighten the blade, cropping is an other option Phoenix offers. Our diver/technician team can assess the exact extent of the damage and then perform a detailed calculation of the ideal cutting line.

Permanent Underwater Repairs

Phoenix has an American Bureau of Shipping (ABS) approved, Class A wet underwater fillet Welding Procedure Specification for ASTM A 131 and Group II steels of the American Welding Society D1.1 structural welding code. With this procedure, Phoenix can perform permanent underwater weld repairs to classed vessels and structures.

Partner Network & Support Facilities

Phoenix diving teams have rapid response capabilities to any port across the globe. Additionally, we have partner network and support facilities in the following locations:

Cape Town, South Africa | Cartagena, Columbia | Curacao |
Manama, Kingdom of Bahrain | Rotterdam, The Netherlands |
Valparaiso, Chile

ClassNK



**BUREAU
VERITAS**



Phoenix International Holdings, Inc.

An employee owned company

