

Ship Inspections

With hundreds of thousands of seafaring vessels carrying crew and cargo all over the world, hull integrity remains an operational and safety concern. Cracks, dents, corrosion, leaks, or any other manner of irregularities can compromise the hull's integrity, resulting in costly repairs. Since frequent dry docking is not practical, regular underwater inspections carried out by experienced and professional commercial divers is a straightforward and cost-effective solution.

Phoenix has over 20+ years in both repair and maintenance services and is accredited by several marine classification societies including American Bureau of Shipping (ABS), DNV-GL, Lloyds, Bureau Veritas (BV), RINA, and Class NK. Our experienced and qualified commercial divers regularly carry out underwater hull inspection surveys for both commercial and military clients alike. These services conclude with a detailed report containing photos and/or video so that any detected problems can be promptly identified and remedied.

Services we provide include:

- Underwater In Lieu of Drydock (UWILD)
 - Conditions
 - Reporting
 - Surveyor Attendance
- In Water Surveys (IWSs)
- Invasive Alien Species (AIS) detection and removal
- Damage Inspections
- Eddy Currents
- Magnetic Particle Inspection (MPI)
- Nondestructive Testing (NDT) Level II and III
- Nondestructive Examination (NDE)
- Observe/Monitor condition of anti-fouling paint
- Obstruction Removal
- Ultrasonic Thickness Gauging (UTG)

Contact us to learn more

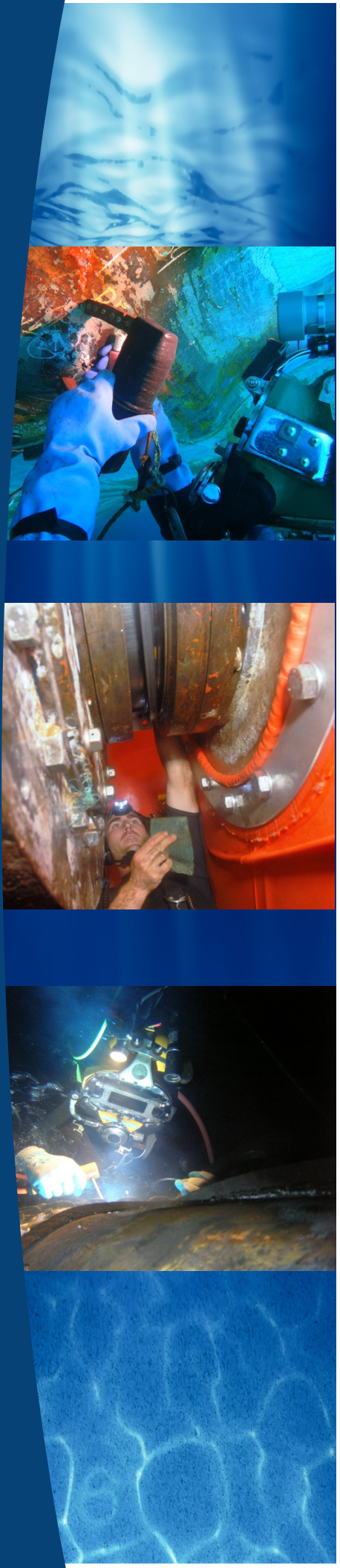
www.phnx-international.com

985.399.0606—Bayou Vista, LA | 954.523.4038—Ft. Lauderdale, FL

281.815.8050—Houston, TX | 301.341.7800—Largo, MD

757.855.7516—Chesapeake, VA | 808.486.6595—Aiea, HI

619.207.0871—San Diego, CA | 228.731.7898—Stennis Space Center, MS



UWILD Inspections

By integrating Phoenix's safe and fast UWILD inspection services into your operations schedule, you can simultaneously protect your asset while avoiding costly dry-docking time and money.

A Phoenix underwater UWILD inspection includes:

- Crack and Leak Detection
- Damage Assessment
- Hull Coating
- Hull Survey
- Paint, Epoxy & Coating
- Rudders and Bearings
- Running Gear
 - Fairwaters
 - Propellers
 - Rope Guards
 - Struts

Partner Network & Support Facilities

Phoenix diving teams have rapid response capabilities to any port across the globe. Additionally, we have partner network and support facilities in the following locations:

Cape Town, South Africa | Cartagena, Columbia | Curacao |
Manama, Kingdom of Bahrain | Rotterdam, The Netherlands |
Valparaiso, Chile



Phoenix International Holdings, Inc.

An employee owned company

